

Everything under control

inel

inel.gda.pl



35 years
of experience



About us	4
<hr/>	
Tubular motors	6
<hr/>	
Remote controls	16
<hr/>	
Internet control units	30
<hr/>	
Door and rolling grill control units	33
<hr/>	
Controllers	36
<hr/>	
Accessories	39
<hr/>	
Tubular motor selection table	46

About us

Comfort, safety, modernity. These were the three goals we had in mind when establishing our company and starting the development of innovative products to increase the comfort and safety in the homes of our clients.

About us

5

We offer a wide range of control devices for roller blinds: simple and advanced, implementing a variety of sensors, as well as the Internet access.

We design and manufacture all of our roller blind and door control systems ourselves. We only use components made by globally leading manufacturers.

To meet your requirements we organize technical training courses in our head office in Gdańsk.

For detailed information please contact us.

We care about our clients and thus we provide comprehensive technical assistance during the installation and operation of our devices. We guarantee quick resolution of all complaints, without unnecessary paperwork.

5 years
of warranty

35 years
of experience

inel

Everything under control

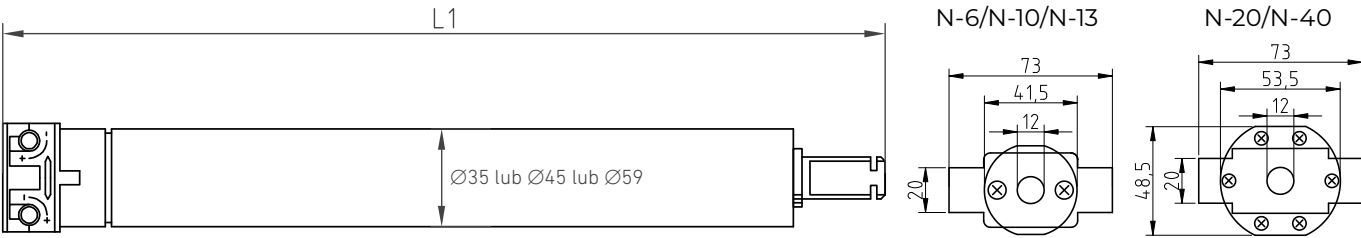
Tubular motors

Motors manufactured by INEL are intended for controlling the operation of roller shutters, blinds, sunblinds as well as doors and rolled mesh shutters.

Standard

Standard motors are compatible with:
40 mm, 50mm, 60mm and 70mm diameter octagonal tubes and
38mm, 63mm, and 78mm diameter round tubes.
Mechanical limit switches.

- The set includes:
- crown
 - adapter
 - mounting bracket



SH - a short motor

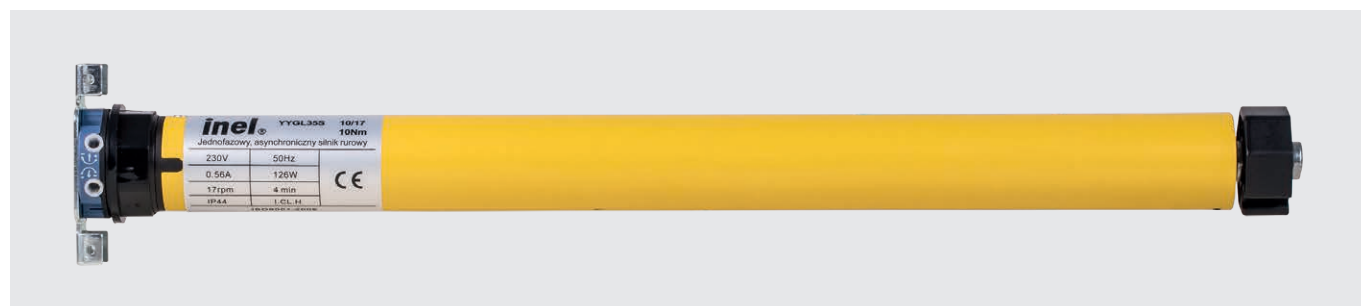
	Symbol	Torque (Nm)	Rotation Speed (obr./min.)	Tube diameter (mm)	Supply voltage (V)	Voltage frequency (Hz)	Power (W)	Current (A)	Operating time (min)	IP rating (IP)	Maximum RPM	Weight (kg)	Length L1 (mm)
N-6	YYGL35S-6/28 GM35S-6/28	6	28	35	230	50	115 145	0,50 0,65	>=4	IP 44	18 39	1,45	555 550
N-6SH	YYGL35SH-6/17 GM35SH-6/17	6	17	35	230	50	81	0,35	>=4	IP 44	18	1,15	390 405
N-10	YYGL35S-10/17 GM35S-10/17	10	17	35	230	50	126 118	0,56 0,51	>=4	IP 44	18 39	1,30	455 485
N-13	YYGL35S-13/14 GM35S-13/14	13	14	35	230	50	126	0,56	>=4	IP44	18	1,40	555
N-20	YYGL45S-20/15 GM45S-20/15	20	15	45	230	50	156 130	0,68 0,59	>=4	IP 44	20	1,90	440 480
N-40	YYGL45S-40/15 GM45S-40/15	40	15	45	230	50	218	0,95	>=4	IP 44	20	2,45	550 555
N-100S	YYGL59S-100/12	100	12	59	230	50	400	1,8	>=4	IP 44	21	4,60	605

With built-in radio receiver

Motors with built-in radio receiver are compatible with:
**40 mm, 50mm and 60mm diameter octagonal tubes and
 38mm, 63mm, and 78mm diameter round tubes.**
 Mechanical limit switches.

The set includes:

- crown
- adapter
- mounting bracket



R- wireless control motor

	Symbol	Torque (Nm)	Rotation Speed (obr./min.)	Tube diameter (mm)	Supply voltage (V)	Voltage frequency (Hz)	Power (W)	Current (A)	Operating time (min)	IP rating (IP)	Maximum RPM	Weight (kg)	Length L1 (mm)
N-6R	YYGL35R-6/28 GM35R-6/28	6	28	35	230	50	115 145	0,50 0,65	>=4	IP 44	18	1,45	555 555
N-10R	YYGL35R-10/17 GM35R-10/17	10	17	35	230	50	126 118	0,56 0,51	>=4	IP 44	18 39	1,45	555 555
N-13R	YYGL35R-13/14 GM35R-13/14	13	14	35	230	50	126	0,56	>=4	IP44	18	1,45	555
N-20R	YYGL45R-20/15 GM45R-20/15	20	15	45	230	50	156 130	0,68 0,59	>=4	IP 44	20	1,95	480 500
N-40R	YYGL45R-40/15 GM45R-40/15	40	15	45	230	50	218	0,95	>=4	IP 44	20	2,50	550 555

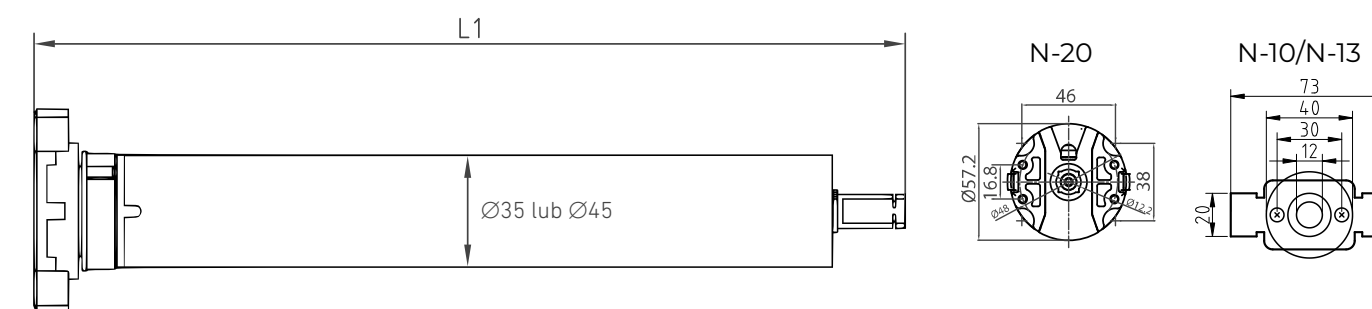
With overload detection function

Motors with overload detection function are compatible with:
40 mm, 50mm and 60mm diameter octagonal tubes.

The limit positions are set automatically. Motor installation with blocking hangers and stoppers in the lower slat.
 PR type of motors can be used with a monostable switch for manual control.

The set includes:

- crown
- adapter
- mounting bracket



P- overload detection motor

PR- wireless control motor with overload detection function

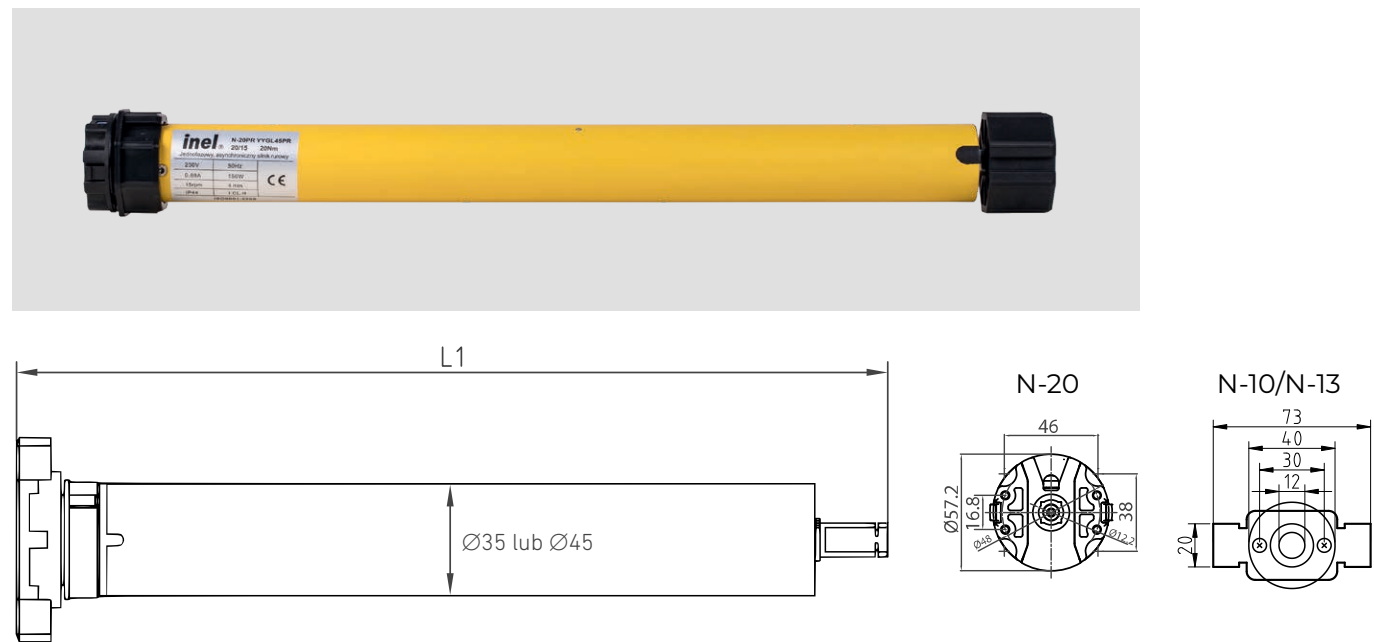
	Symbol	Torque (Nm)	Rotation Speed (obr./min.)	Tube diameter (mm)	Supply voltage (V)	Voltage frequency (Hz)	Power (W)	Current (A)	Operating time (min)	IP rating (IP)	Maximum RPM	Weight (kg)	Length L1 (mm)
N-10P	YYGL35P-10/17 GM35P-10/17	10	17	35	230	50	126	0,56	>=4	IP 44	60	1,50	555
N-10PR	YYGL35PR-10/17 GM35PR-10/17	10	17	35	230	50	126	0,56	>=4	IP 44	60	1,55	555
N-13P	YYGL35P-13/14	13	14	35	230	50	126	0,56	>=4	IP44	18	1,50	555
N-13PR	YGL35PR-13/14	13	14	35	230	50	126	0,56	>=4	IP44	18	1,55	555
N-20P	YYGL45P-20/15 GM45P-20/15	20	15	45	230	50	156	0,68	>=4	IP 44	60	1,95	530
N-20PR	YYGL45PR-20/15 GM45PR-20/15	20	15	45	230	50	156	0,68	>=4	IP 44	60	2,00	530

With obstacle detection function

Motors with obstacle detection function are compatible with:
40 mm and 60mm diameter octagonal tubes.

Electronic limit switches. The motor installation with soft hangers.
 RE type of motors can be used with a monostable switch for manual control.

- The set includes:**
- crown
 - adapter
 - mounting bracket



E - obstacle detection motor
 RE - wireless control motor with obstacle detection function

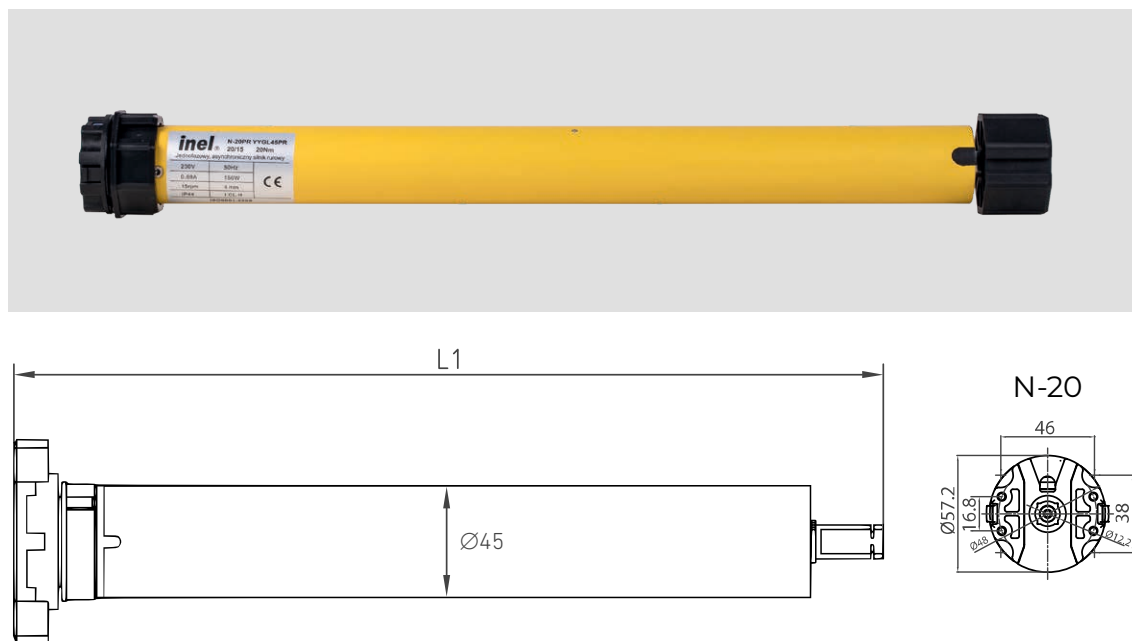
	Symbol	Torque (Nm)	Rotation Speed (obr./min.)	Tube diameter (mm)	Supply voltage (V)	Voltage frequency (Hz)	Power (W)	Current (A)	Operating time (min)	IP rating (IP)	Maximum RPM	Weight (kg)	Length L1 (mm)
N-10E	YYGL35E-10/17	10	17	35	230	50	126	0,56	>=4	IP 44	60	1,50	555
N-10RE	YYGL35RE-10/17	10	17	35	230	50	126	0,56	>=4	IP 44	60	1,55	555
N-13E	YYGL35E-13/14	13	14	35	230	50	126	0,56	>=4	IP44	18	1,50	555
N-13RE	YGL35RE-13/14	13	14	35	230	50	126	0,56	>=4	IP44	18	1,55	555
N-20E	YYGL45E-20/15	20	15	45	230	50	156	0,68	>=4	IP 44	60	1,95	530
N-20RE	YYGL45RE-20/15	20	15	45	230	50	156	0,68	>=4	IP 44	60	2,00	530

With obstacle detection function for ZIP screen

Motors with obstacle detection function for ZIP screen are compatible with:
63 mm and 78 mm diameter round tubes.

Electronic limit switches. The limit positions can be set manually or automatically.
 Tubular motors with built-in radio receiver can be used with a monostable switch for manual control.

- The set includes:**
- crown
 - adapter
 - mounting bracket



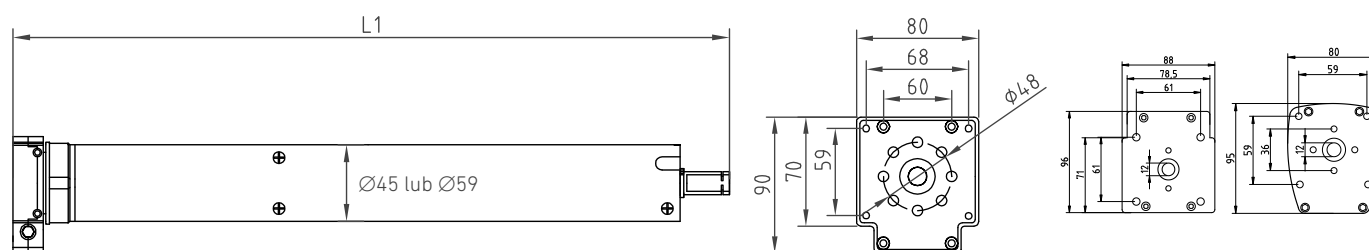
ES – obstacle detection function motor for screen zip blinds
 RES – wireless control and obstacle detection function motor for screen zip blinds

	Symbol	Torque (Nm)	Rotation Speed (obr./min.)	Tube diameter (mm)	Supply voltage (V)	Voltage frequency (Hz)	Power (W)	Current (A)	Operating time (min)	IP rating (IP)	Maximum RPM	Weight (kg)	Length L1 (mm)
N-20ES	YYGL45ES-20/15	20	15	45	230	50	156	0,68	>=4	IP 44	60	1,95	530
N-20RES	YYGL45RES-20/15	20	15	45	230	50	156	0,68	>=4	IP 44	60	2,00	530

With manual emergency crank handle

Motors with manual emergency crank handle are compatible with:
60mm and 70mm diameter octagonal tubes and
70mm and 78mm diameter round tubes.
 Mechanical limit switches.

- The set includes:**
- crown
 - adapter
 - mounting bracket



R - wireless control motor

	Symbol	Torque (Nm)	Rotation Speed (obr./min.)	Tube diameter (mm)	Supply voltage (V)	Voltage frequency (Hz)	Power (W)	Current (A)	Operating time (min)	IP rating	Maximum RPM	Weight (kg)	Length L1 (mm)
N-50N HK	YYGL45M-50/12 GM45M-50/11	50	12 11	45	230	50	232 180	1,01 0,80	>=4	IP 44	21	3,00	590 605
N-50R N HK	YYGL45MR-50/12 GM45MR-50/11	50	12	45	230	50	232	1,01	>=4	IP 44	21	3,20	720
N-100N HK	YGL59M-100/12 GM59M-100/11	100	12 11	59	230	50	350 342	1,52 1,53	>=4	IP 44	21	5,65	685 658
N-140N HK	YYGL59M-140/9 GM59M-140/7	140	9 7	59	230	50	430 378	1,86 1,64	>=4	IP 44	21 20	6,20	685 658

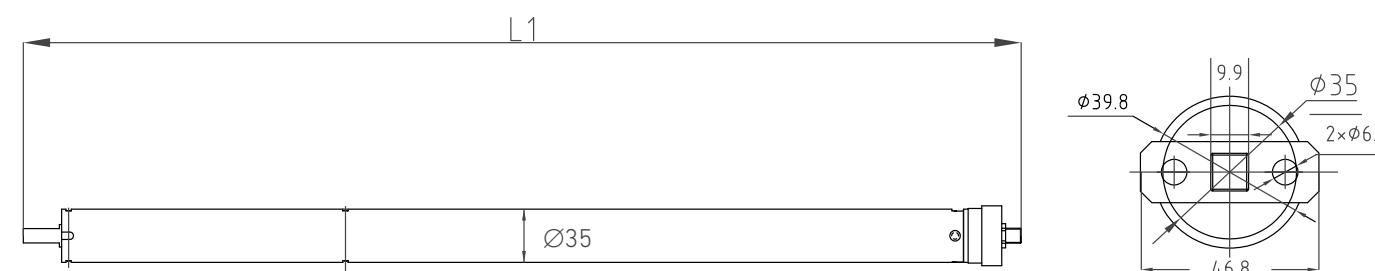
DC type tubular motor with built-in radio receiver and solar panel

DC type tubular motor with a built- in radio receiver and solar-powered battery are compatible with:
40 mm, 50 mm and 60 mm diameter octagonal tubes and
38 mm, 63 mm and 78 mm diameter square tubes.

Electronic limit switches. The battery is charged by the solar panel. If the energy provided by the solar panel is insufficient, the battery can be charged using an auxiliary charger (available as an optional accessory).

- The set includes:**
- crown
 - adapter
 - mounting bracket
 - solar panel

- Technical data of solar panel:**
- dimensions: 470x60x3 mm
 - made of FR-4 glass-epoxy laminate



LER – wireless control DC motor with solar panel

	Symbol	Torque (Nm)	Rotation Speed (obr./min.)	Tube diameter (mm)	Supply voltage (V)	Voltage frequency (Hz)	Power (W)	Current (A)	Operating time (min)	IP rating	Maximum RPM	Weight (kg)	Length L1 (mm)
N-10LER	GM35LE-10/09	10	9	35	12	DC	21,6	1,8	>= 4	IP 44	30	1,55	655

With built-in radio receiver for InelControl system with bidirectional communication

Motors with built-in radio receiver and overload detection function are compatible with: 40 mm, 50 mm and 60 mm diameter octagonal tubes.

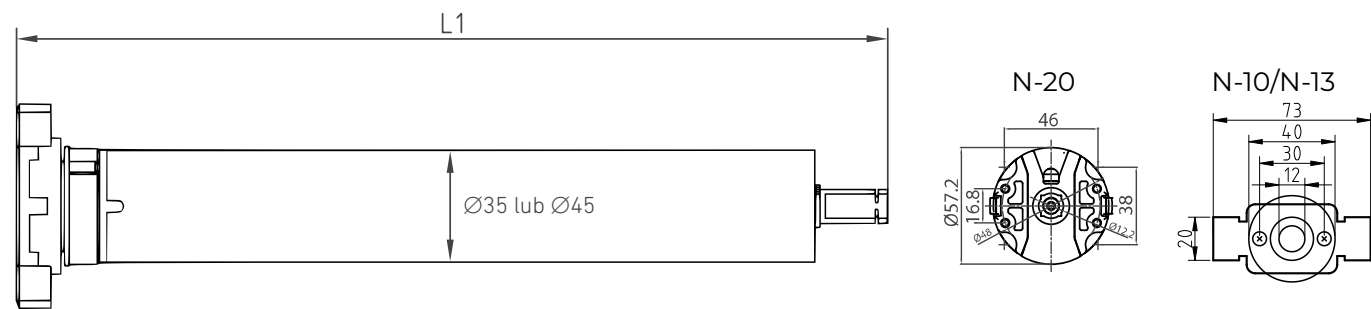
The tubular motors are compatible with roller shutters only. The limit positions are set automatically. The tubular motors can be used with a monostable roller shutter switch for manual control.

Motor installation with blocking hangers and stoppers in the lower slat.

NOTE: Operating frequency: 686.30 MHz.

The set includes:

- crown
- adapter
- mounting bracket



PRIC- wireless control motor with overload detection function for InelControl System (bidirectional communication)

	Symbol	Torque (Nm)	Rotation Speed (obr./min.)	Tube diameter (mm)	Supply voltage (V)	Voltage frequency (Hz)	Power (W)	Current (A)	Operating time (min)	IP rating (IP)	Maximum RPM	Weight (kg)	Length L1 (mm)
N-10PRIC	YYGL35PRIC-10/17	10	17	35	230	50	126	0,56	>=4	IP 44	60	1,55	555
N-13PRIC	YYGL35PRIC-13/14	13	14	35	230	50	126	0,56	>=4	IP44	18	1,55	555
N-20PRIC	YYGL45PRIC20/15	20	15	45	230	50	156	0,68	>=4	IP 44	60	2,00	530

Motors with built-in radio receiver and obstacle detection function are compatible with: 40 mm and 60 mm diameter octagonal tubes.

The tubular motors are compatible with: roller shutters, blinds and screens.

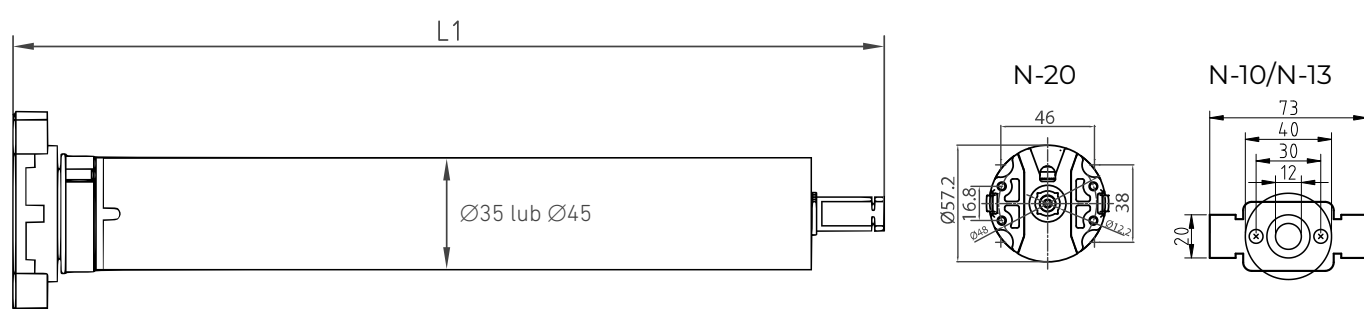
The limit positions can be set manually or automatically for roller shutters and screens (blocking hangers and stoppers are required for roller shutters).

The tubular motors can be used with a monostable roller shutter switch for manual control.

NOTE: Operating frequency: 686.30 MHz.

The set includes:

- crown
- adapter
- mounting bracket



REIC- wireless control motor with obstacle detection function for InelControl System (bidirectional communication)

	Symbol	Torque (Nm)	Rotation Speed (obr./min.)	Tube diameter (mm)	Supply voltage (V)	Voltage frequency (Hz)	Power (W)	Current (A)	Operating time (min)	IP rating (IP)	Maximum RPM	Weight (kg)	Length L1 (mm)
N-10REIC	YYGL35REIC-10/17	10	17	35	230	50	126	0,56	>=4	IP 44	60	1,55	555
N-13REIC	YYGL35REIC-13/14	13	14	35	230	50	126	0,56	>=4	IP44	18	1,55	555
N-20REIC	YYGL45REIC-20/15	20	15	45	230	50	156	0,68	>=4	IP 44	60	2,00	530

Remote controls

**We offer a wide range of remote controls:
for tubular motors with built-in radio receiver,
controllers and central control units.
The use of sequential codes ensures
the highest level of security.**

TST series with otuch screen

PIL-99TSTX

Product features:

- colour touch screen
- supports up to 99 individual receivers
- feedback channel (device status on the remote control screen)
- comfort position
- built-in clock and calendar with astro function, allowing to automatically run timed programmes
- create up to 50 timed programme scenarios
- add names to individual channels
- shutter mode (setting slat angle)
- blind/shutter unsealing feature
- menu available in 6 language versions: Polish, English, German and French, Romanian and Russian
- ability to assign devices to places
- simple mode with limited number of channels
- included: remote control with magnetic key ring and USB C/USB power cable



Technical overview:

- dimensions: 168 x 63 x 13 mm
- power supply: built-in 3.7 VDC battery
- charging: USB C 5 VDC 1 A
- operating temperature: -10°C to +55°C
- operating frequency: 868,3 Hz



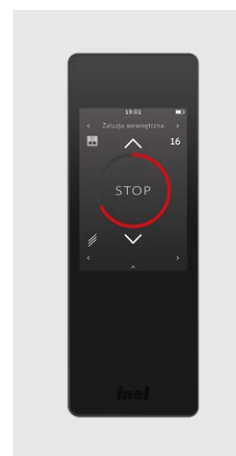
PIL-99TST *

Product features:

- colour touch screen
- supports up to 99 individual receivers and/or receiver groups
- built-in clock and calendar with astro function, allowing to automatically run timed programmes
- create up to 32 timed programme scenarios
- add names to individual channels
- shutter mode (setting slat angle)
- blind/shutter unsealing feature
- menu available in 6 language versions: Polish, English, German and French, Romanian and Russian
- channel "00" is used to control all drives which have been registered with given remote control
- simple mode with limited number of channels
- included: remote control with magnetic key ring and USB C/USB power cable

Technical overview:

- dimensions: 168 x 63 x 13 mm
- power supply: built-in 3.7 VDC battery
- charging: USB C 5 VDC 1 A
- operating temperature: -10°C to +55°C
- operating frequency: 433.92 Hz



* available in 2023 year

MMT Series

Pilot PIL-19/99MMT

Product features:

- supports 19 or 99 independent receivers and/or receiver groups
- built-in clock and calendar with "astro" function, allowing to automatically run timed programmes
- create up to 30 timed programme scenarios
- color clear LCD display indicating: drive operation direction, channel number, day of the week and time, battery condition
- it is possible to create names for individual channels dedicated to rooms within the area (up to 16 alphanumeric characters)
- shutter mode (setting slat angle)
- blind/shutter unsealing feature
- menu in 5 language versions: Polish, English, German, French and Romanian
- channel "00" is used to control all drives which have been registered with the given remote control
- 2 color versions available: white or black
- battery powered
- the short mode allows to limit the number of channels
- included: remote control with wall hanger and 2×AAA battery

Technical overview:

- dimensions: 150×42×21 mm
- supply: 3V (2 x AAA battery)
- operating temperature from -10°C to +55°C
- operating frequency: 433.92 MHz



DL series

PIL-01DL

Product features:

- supports 1 independent receiver and/or receiver group
- LED indicating command transmissions
- battery powered
- magnetic wall hanger, modern design, ease of use
- 3 colour versions available: white, black, black-and-white
- included: remote control with magnetic wall hanger, CR-2430 battery

Technical overview:

- dimensions: 130×45×12 mm
- supply: 3V (CR-2430 battery)
- operating temperature from -10°C to +55°C
- operating frequency: 433.92 MHz



PIL-05DL

Product features:

- supports 5 independent receivers and/or receiver groups
- LEDs indicating channel number
- shutter mode (setting slat angle)
- by selecting all channels (all LEDs light up) you can control all 5 receivers at the same time
- battery powered
- magnetic wall hanger, modern design, ease of use
- 3 colour versions available: white, black, black-and-white
- included: remote control with magnetic wall hanger, CR-2430 battery

Technical overview:

- dimensions: 130×45×12 mm
- supply: 3V (CR-2430 battery)
- operating temperature from -10°C to +55°C
- operating frequency: 433.92 MHz



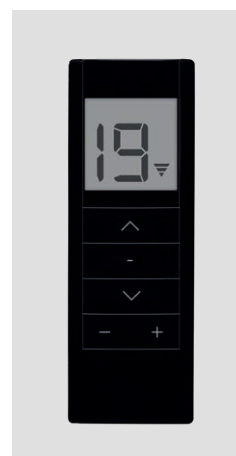
PIL-09/19DL

Product features:

- supports 9 or 19 independent receivers and/or receiver groups, respectively
- LCD display indicating: drive operation direction, channel number, low battery
- shutter mode (setting slat angle)
- channel "0" is used to control all drives which have been registered with the given remote
- battery powered
- magnetic wall hanger, modern design, ease of use
- 3 colour versions available: white, black and black-and-white
- included: remote control with magnetic wall hanger, CR-2430 battery

Technical overview:

- dimensions: 130×45×12 mm
- supply: 3V (CR-2430 battery)
- operating temperature from -10°C to +55°C
- operating frequency: 433.92 MHz



PIL-19/99DLT

Product features:

- supports 19 or 99 independent receivers and/or receiver groups, respectively
- built-in clock and calendar with astro function, allowing to automatically
- run timed programmes
- create up to 32 timed programme scenarios
- clear backlit graphic display indicating: drive operation direction,
- channel number, day of the week and time
- it is possible to create names for individual channels dedicated to rooms within the area (up to 16 alphanumeric characters)
- shutter mode (setting slat angle)
- blind/shutter unsealing feature
- menu in 4 language versions: Polish, English, German and French
- channel "00" is used to control all drives which have been registered with the given remote control
- the short mode allows to limit the number of channels
- battery powered
- magnetic wall hanger, modern design, ease of use
- 3 colour versions available: white, black, black-and-white
- included: remote control with magnetic wall hanger, CR-2430 battery

Technical overview:

- dimensions: 130×45×12 mm
- supply: 3V (CR-2430 battery)
- operating temperature from -10°C to +55°C
- operating frequency: 433.92 MHz



PIL-05DLIC

Product features:

- controls devices registered in the InelControl central control unit
- supports 5 independent receivers and/or receiver groups
- the ability to run the scenes
- battery powered
- 3 color versions available: white, black, black-and-white
- included: remote control with magnetic wall hanger and CR-2430 battery

Technical overview:

- dimensions: 130×45×12 mm
- supply: 3V (CR-2430 battery)
- operating temperature from -10°C to +55°C
- operating frequency: 433.92 MHz



PM series

PIL-01PM

Product features:

- supports 1 independent receiver and/or 1 receiver group
- displays the direction of drive operation
- battery powered
- included: remote control with wall hanger, CR-2032 battery

Technical overview:

- dimensions: 130×45×12 mm
- supply: 3V (CR-2032 battery)
- operating temperature from -10°C to +55°C
- operating frequency: 433.92 MHz



PIL-05/09/19PM

Product features:

- supports 5, 9 or 19 independent receivers and/or receiver groups
- LCD display indicating: drive operation direction, channel number, low battery
- shutter mode (setting slat angle)
- the short mode allows to limit the number of channels
- channel "0" is used to control all drives which have been registered with the given remote control
- battery powered
- included: remote control with wall hanger, CR-2032 battery

Technical overview:

- dimensions: 130×45×12 mm
- supply: 3V (CR-2032 battery)
- operating temperature from -10°C to +55°C
- operating frequency: 433.92 MHz



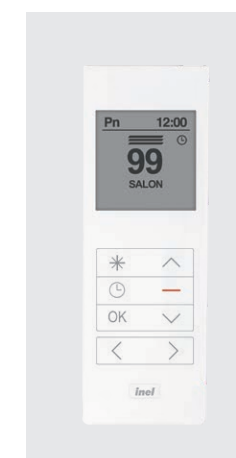
PIL-19/99PMT

Product features:

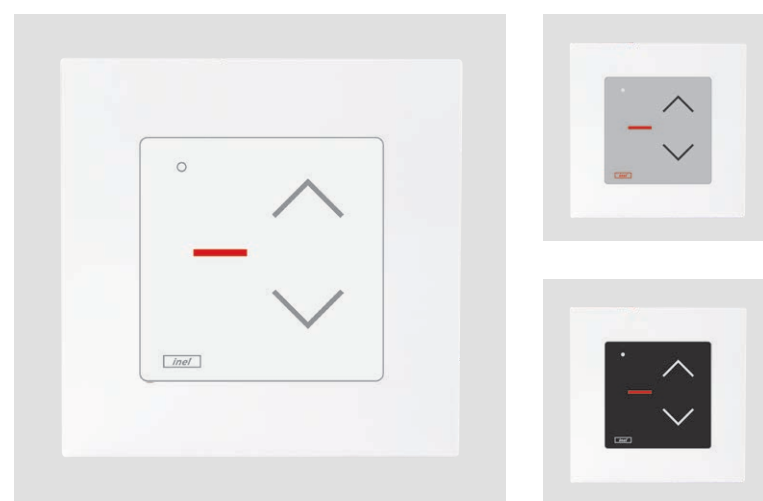
- supports 19 or 99 independent receivers and/or receiver groups, respectively
- built-in clock and calendar with astro function, allowing to automatically run timed programmes
- create up to 32 timed programme scenarios
- clear backlit graphic display indicating: drive operation direction, channel number, day of the week and time
- it is possible to create names for individual channels dedicated to rooms within the area (up to 16 alphanumeric characters)
- shutter mode (setting slat angle)
- blind/shutter unsealing feature
- menu in 4 language versions: Polish, English, German and French
- channel "00" is used to control all drives which have been registered with the given remote control
- battery powered
- included: remote control with wall hanger, 2 CR-2032 batteries

Technical overview:

- dimensions: 130×45×12 mm
- supply: 3V (2x CR-2032 battery)
- operating temperature from -10°C to +55°C
- operating frequency: 433.92 MHz



Wall-mounted NS series



PIL-01NS

Product features:

- supports 1 independent receiver and/or 1 receiver group
- touch panel control
- LED indicating command transmissions
- shutter mode (setting slat angle)
- battery powered
- 3 panel colour options available: white, silver or anthracite
- included: remote control and CR-2032 battery

Technical overview:

- dimensions: 80×80×12 mm
- supply: 3V (CR-2032 battery)
- operating temperature from -10°C to +55°C
- operating frequency: 433.92 MHz

PIL-04NS

Product features:

- supports 4 independent receivers and/or receiver groups
- touch panel control
- LED and beeps indicating command transmissions
- shutter mode (setting slat angle)
- battery powered
- 3 panel colour options available: white, silver or anthracite
- included: remote control and CR-2032 battery

Technical overview:

- dimensions: 80×80×12 mm
- supply: 3V (CR-2032 battery)
- operating temperature from -10°C to +55°C
- operating frequency: 433.92 MHz



Keyring type XB series



PIL-02XB

Product features:

- supports 2 independent receivers
- sliding cover prevents accidental button presses
- battery powered
- included: remote control with keyring, CR-2032 battery

Technical overview:

- dimensions: 55×30×14 mm
- supply: 3V (CR-2032 battery)
- operating temperature from -10°C to +55°C
- operating frequency: 433.92 MHz

PIL-04XB

Product features:

- supports 4 independent receivers
- sliding cover prevents accidental button presses
- battery powered
- included: remote control with keyring, CR-2032 battery

Technical overview:

- dimensions: 65×36×15 mm
- supply: 3V (CR-2032 battery)
- operating temperature from -10°C to +55°C
- operating frequency: 433.92 MHz

Internet control units

You can manage your home automation
from anywhere in the world
with a smartphone or tablet.



Internet central control unit with unidirectional communication

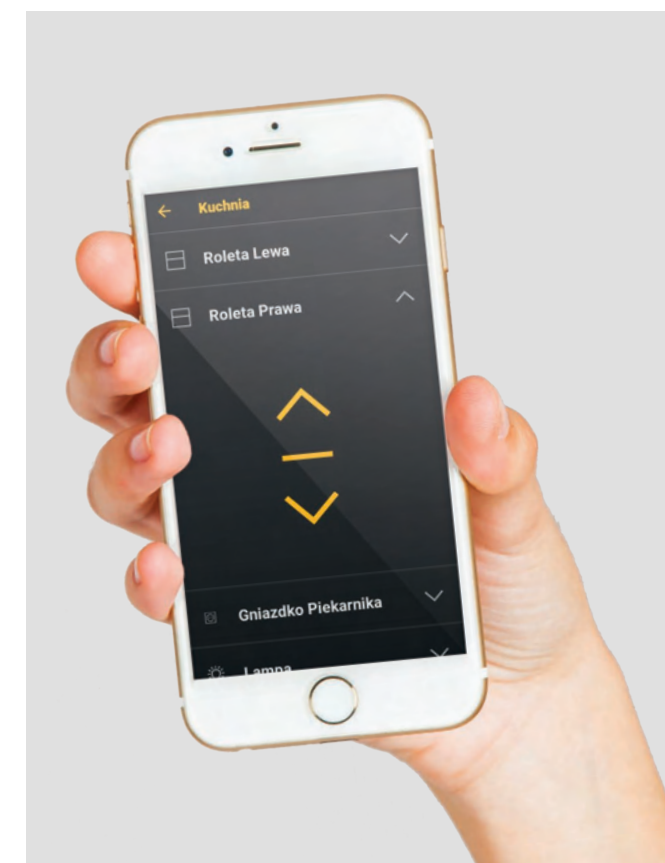
InelNet-01

Product features:

- controls roller blinds, roller shutters, awnings, garage doors, gates, lighting outlets and electrical sockets
- access via Wi-Fi or Internet
- dedicated mobile app for iOS and Android
- supports up to 99 individual channels
- available in 4 language versions: Polish, English, German, French
- includes: control unit with power supply and Ethernet cable

Technical overview:

- dimensions: 140x111x36 mm
- supply voltage: 5V DC
- operating temperature: from -10°C to +55°C
- frequency: 433,92 MHz



Internet central control unit with bidirectional communication

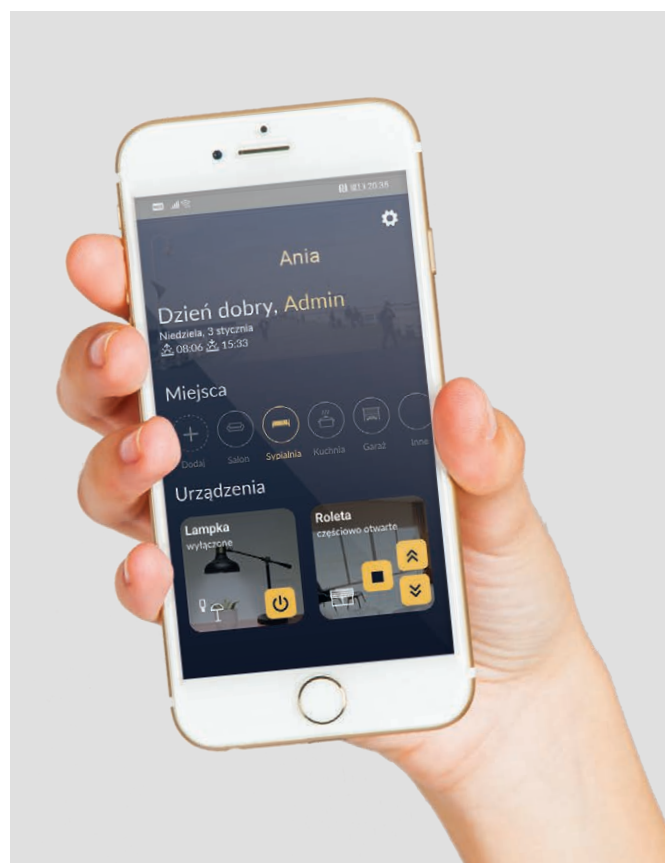
InelControl

Product features:

- controls roller blinds, roller shutters, awnings, garage doors, gates, lighting outlets and electrical sockets
- access via Wi-Fi or Internet
- dedicated mobile app for iOS and Android
- controls up to 99 individual devices
- automatically manages devices using scenes and scenarios
- app available in 4 language versions: Polish, English, German and French
- Wi-Fi connectivity
- includes: control unit with power supply

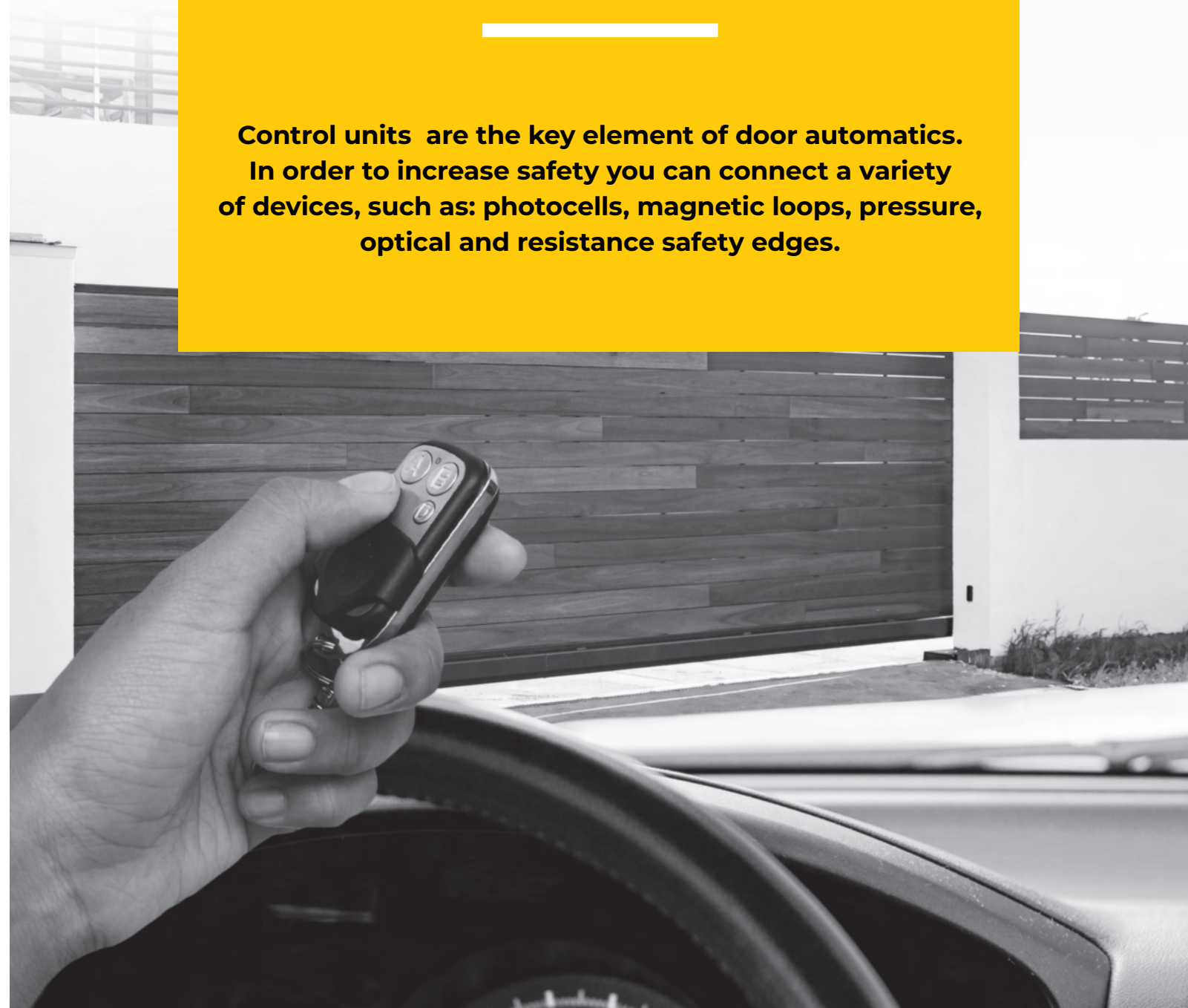
Technical overview:

- dimensions: 110x110x33 mm
- supply voltage: 5V DC
- operating temperature: from -10°C to +55°C
- frequency: 868,3MHz

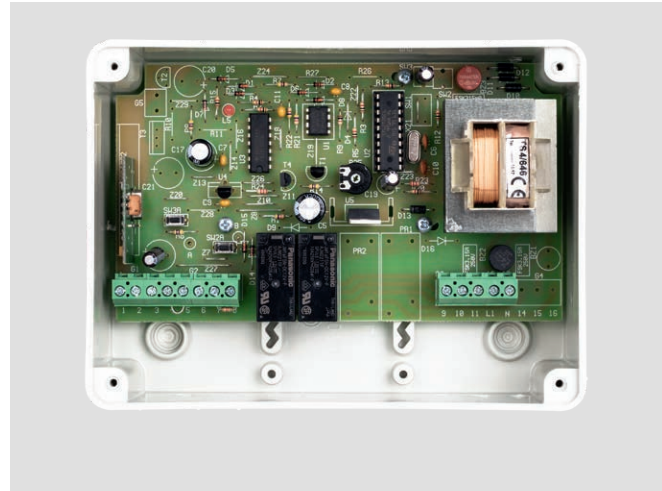


Door and rolling grilles control units

Control units are the key element of door automatics.
In order to increase safety you can connect a variety
of devices, such as: photocells, magnetic loops, pressure,
optical and resistance safety edges.



Single-channel control unit



CRS-435XG

Product features:

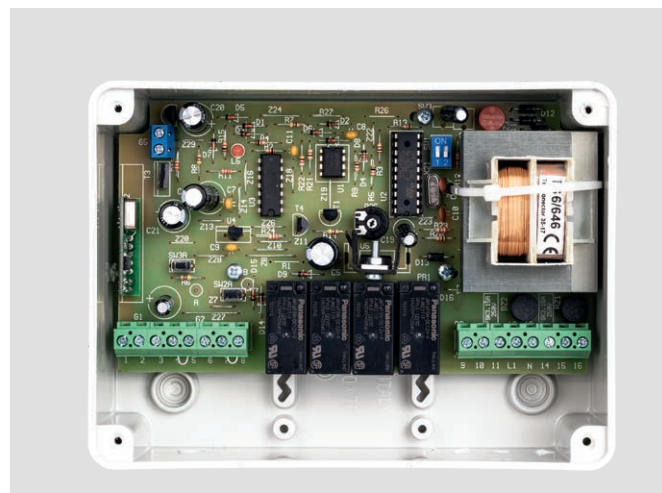
- support 1 drive
- remote radio control (any Inel remote control) and manual wired control (sequential switch)
- stores up to 30 remote controls
- memory for registering up to 30 remote controls
- possibility of connecting a variety of safety devices: photocells, optical and resistance safety edges.
- includes: main unit with two PIL-02XB remotes

Technical overview:

- dimensions: 155x119x75.5 mm
- supply voltage: 230 VAC
- operating temperature: from -10°C to +55°C
- operating frequency: 433.92 M



Dual-channel control unit



CRS-436XG

Product features:

- support 2 drives
- remote radio control (any Inel remote control) and manual wired control (sequential switch)
- memory for registering up to 15 remote controls
- ability to connect devices: photocells
- the unit has 3 operating modes:
 1. Dual channel - control of 2 independent drives
 2. Single channel - control of 1 drive and indicator light
 3. Single channel automatic - control of 1 drive and indicator light. Opening - with remote, closing - automatic in set time.
- includes: main unit with two PIL-02XB remote

Technical overview:

- dimensions: 155x119x75.5 mm
- supply voltage: 230 VAC
- operating temperature: from -10°C to +55°C
- operating frequency: 433.92 MHz

Wireless receivers

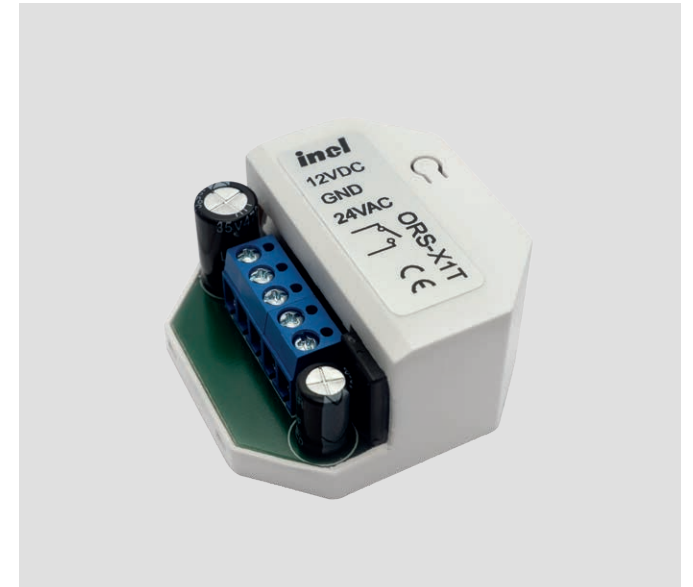
ORS-X1T

Product features:

- supports control units (e.g. sliding door, tilt-up door etc.) of various manufacturers using any Inel remote controls
- stores up to 15 remote controls in standard version
- two remote controls (PIL-02XB) included

Technical overview:

- dimensions: 52x52x30 mm
- supply voltage: 12VDC lub 24 VAC
- operating temperature: from -5°C to +45°C
- frequency: 433.92 MHz



ORS-01IC

Product features:

- InelControl system integration with various manufacturers control units
- closed, partially and fully open status display

Technical overview:

- dimensions: 52x52x30 mm
- supply voltage: 12VDC lub 24 VDC/AC
- operating temperature: from -10°C to +55°C
- frequency: 868,3MHz



Controllers

Controllers with radio receivers are used to control:
roller shutters, facade blinds,
internal horizontal shutters and light sources.

Wireless controllers work
with all our remote controls.



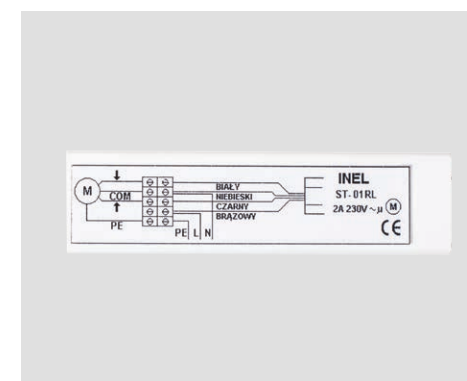
ST-01R/ST-01RS/ST-01RZ

Product features:

- controller with housing, installed in flush-mounted wall box, 60 mm diameter and double depth
- one controller can operate only one drive
- can be connected to a shutter button of any manufacturer
- the ST-01RS version allows to control light sources (on/off)
- the ST-01RZ version can control facade blinds and internal horizontal shutters (slat rotation)

Technical overview:

- dimensions: 49×49×23 mm
- supply voltage: 230 VAC
- operating temperature: from -10°C to +55°C
- frequency: 433.92 MHz



ST-01RLZ

Product features:

- controller in sealed housing mounted to the side of the roller blind cassette
- one controller can operate only one drive
- universal controller can control: roller shutters, facade blinds and internal horizontal shutters (slat rotation)

Technical overview:

- dimensions: 97×22×26 mm
- supply voltage: 230 VAC
- operating temperature: from -10°C to +55°C
- frequency: 433.92 MHz



ST-01RN

Product features:

- installed in flush-mounted wall box, 60 mm diameter and double depth
- one controller can operate only one drive
- touch panel control
- the touch panel is available in three color options (white, silver, anthracite)

Technical overview:

- dimensions: 80×80×40 mm
- supply voltage: 230 VAC
- operating temperature: from -10°C to +55°C
- frequency: 433.92 MHz

For InelControl system with bidirectional communication



ST-01IC single-channel controller

Product features:

- ON/OFF controller for InelControl system devices
- controls lighting outlets and electrical sockets
- radio or monostable switch control
- device configuration for automatic operation using time or sensor-triggered scenarios
- installed in flush-mounted wall box

Technical overview:

- dimensions: 56x56x26 mm
- supply voltage: 230 VAC
- operating temperature: from -10°C to +55°C
- frequency: 868,3 MHz



ST-02IC dual-channel controller

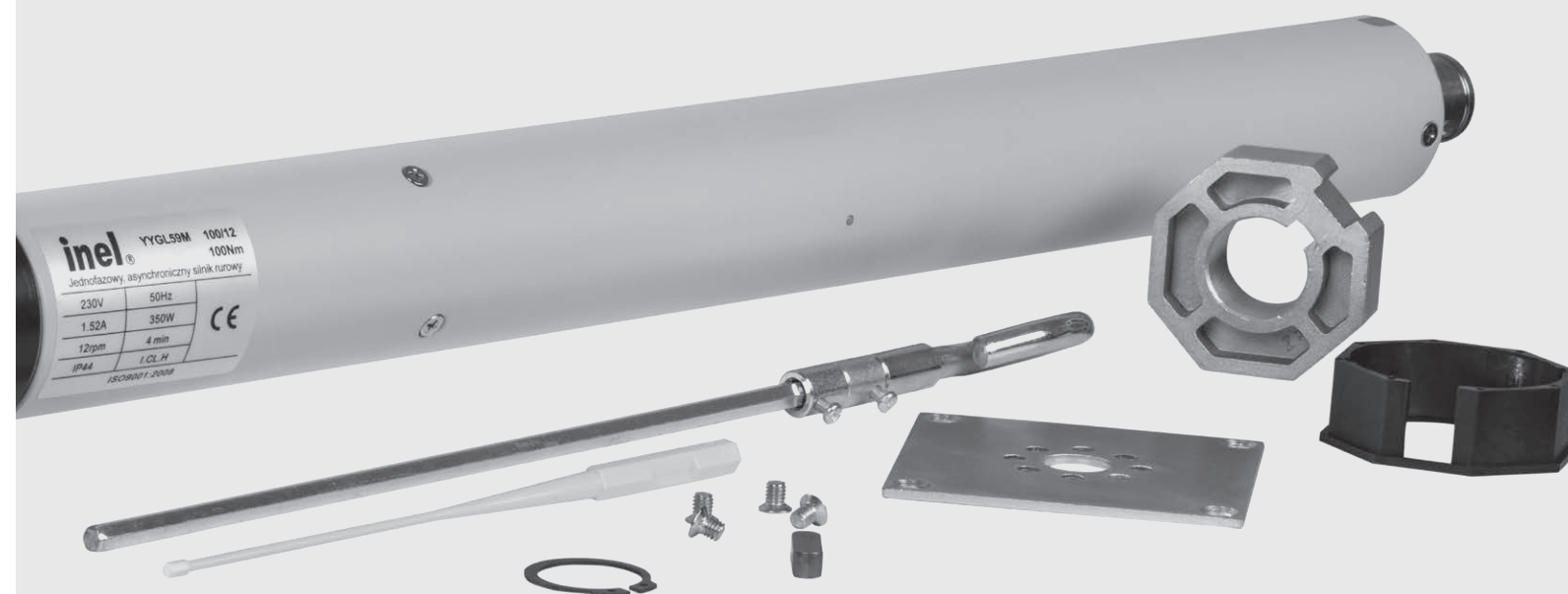
Product features:

- ON/OFF controller for InelControl system devices
- controls lighting outlets and electrical sockets
- radio or monostable switch control
- device configuration for automatic operation using time or sensor-triggered scenarios
- installed in flush-mounted wall box

Technical overview:

- dimensions: 56x56x26 mm
- supply voltage: 230 VAC
- operating temperature: from -10°C to +55°C
- frequency: 868,3 MHz

Accessories





Shock sensor for sunblinds

Product features:

- allows for automatic sunblind closing in windy weather
- six-degree sensitivity scale
- sensor damage will cause the sunblind to close automatically

Technical overview:

- dimensions: 130×40×25 mm
- supply: 3 VDC (2x AAA battery)
- operating temperature: from -10°C to +55°C
- frequency: 433.92 MHz



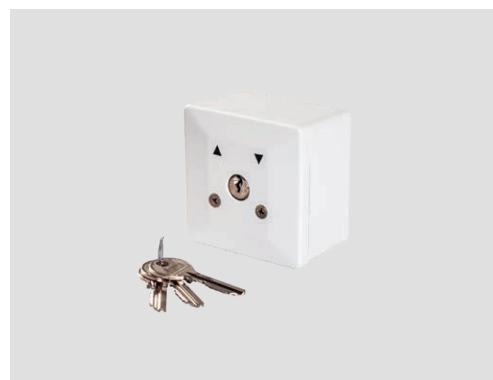
Signal repeater

Product features:

- enhances remote control range
- maintenance-free device

Technical overview:

- dimensions: 130×40×25 mm
- internal supply: 5 VDC
- operating temperature: from -10°C to +55°C
- frequency: 433.92 MHz



Surface-mounted key switch

Product features:

- two operation modes: stable (after turning stays in the same position) and retractive (after turning goes back to its initial position)

Technical overview:

- dimensions: 81×81×53 mm
- supply voltage: 250 V AC
- operating temperature: from -30°C to +50°C
- manufacturer: Inprojal



Flush-mounted key switch

Product features:

- two operation modes: stable (after turning stays in the same position) and retractive (after turning goes back to its initial position)

Technical overview:

- dimensions: 81×81×70 mm
- supply voltage: 250 V AC
- operating temperature: from -30°C to +50°C
- manufacturer: Inprojal



ROYAL S control timer

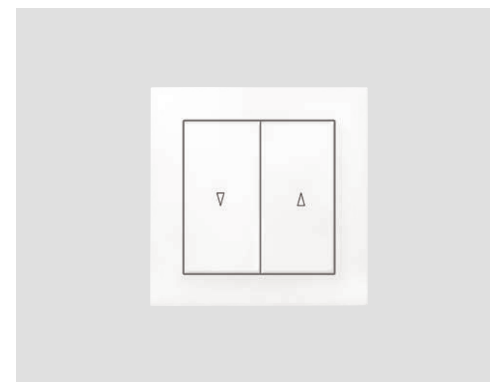
Controller for a wired system using a 230V control bus

Product features:

- automatic daily programming, holiday mode, impulse operation
- large backlit color display
- programmable timer, opening and closing times can be set for the entire week or separately for every weekday
- automatic switching into daylight savings mode and back
- ability to set comfortable position and shutter (impulse) mode, ability to connect a day/night sensor

Technical overview:

- dimensions: 80×80×50 mm
- supply voltage: 230 VAC
- operating temperature from 0°C to +45°C
- manufacturer: Inprojal



Manual switch MAN-001

The manual switch enables manual control of the motor

Technical overview:

- dimensions: 85×85×40 mm
- supply voltage: 230 VAC
- operating temperature from 0°C to +45°C
- manufacturer: Oospel



FOT-01

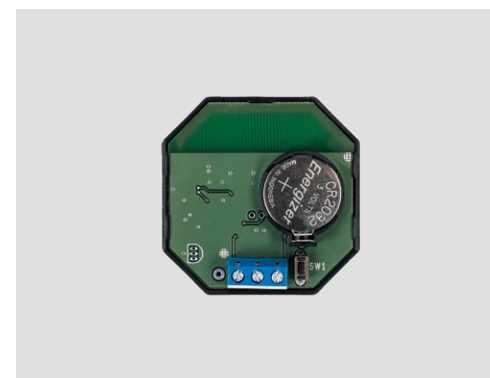
Photocell for control units: CRS-435XG, CRS-436XG

Product features:

- protection against accidental door closing

Technical overview:

- dimensions: 90×46×32 mm
- supply voltage: 12 V DC or 24 V DC/AC
- operating temperature: from -10°C to +55°C
- operating range: 20 m
- manufacturer: Nologo



The flush-mounted remote PIL-01PT

The flush-mounted PIL-01PT remote is capable of remotely controlling any type of radio-controlled drives as well as INEL wireless controllers

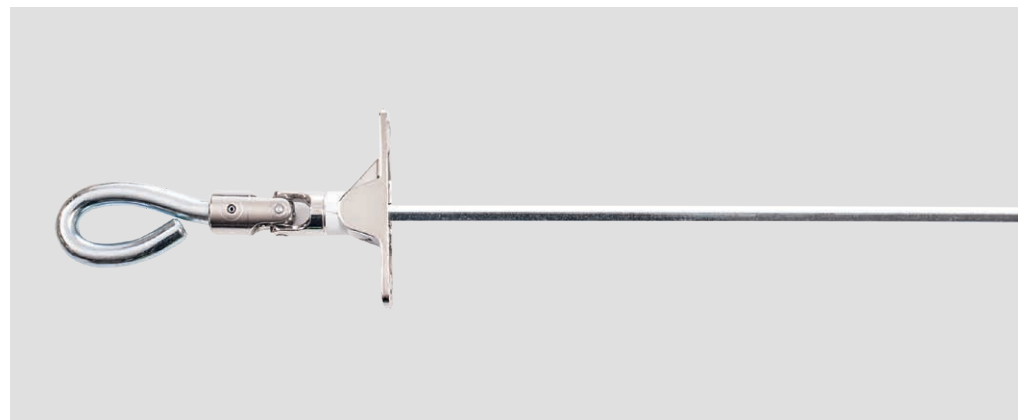
Product features:

- works with an alarm control unit and external sensors
- shutter switch of the same line as other electric equipment within the premises can be used
- powered by batteries or (optionally) externally (12V DC)
- included: remote control and CR-2032 battery

Technical overview:

- dimensions: 51×51×16 mm
- supply: 3V battery (CR-2032) or 12V DC power supply
- operating temperature from -10°C to +55°C
- operating frequency: 433.92 MHz

Cardan joint



K-01 N HK motor crank (L=140 cm)



Installation cable

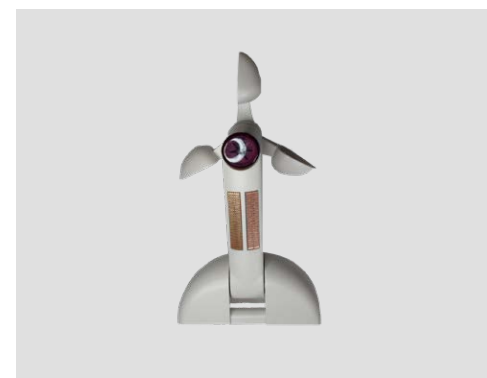
Cable for programming wired motors with obstacle or overload detection function.



Charger

Charger for DC type motor

For InelControl system with bidirectional communication



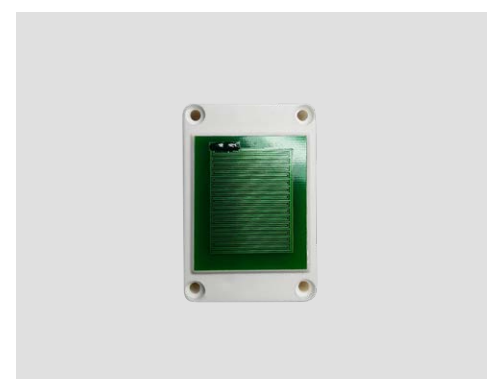
Wind sensor

Product features:

- wind sensor for InelControl system
- triggers scenes after reaching a preset wind speed
- automatically sets safe position for devices susceptible to strong winds and restores previous position in normal wind conditions
- detects wind speeds from 1 m/s

Technical overview:

- dimensions: 230×120×105 mm
- supply voltage: 12 VDC or 24VDC/AC
- operating temperature: from -20°C to +55°C
- frequency: 868,3 MHz



Rain sensor

Product features:

- rain sensor for InelControl system consists from 2 elements
- triggers scenes after detecting precipitation (rain or snow)

Technical overview:

- dimensions: 52x52x30 mm and 65x45x37 mm
- supply voltage: 12 VDC
- operating temperature: from -20°C to +55°C
- frequency: 868,3 MHz



Light and temperature sensor

Product features:

- light and temperature sensor for InelControl system
- measures light intensity (lux) and ambient temperature at 1°C accuracy
- triggers scenes after reaching a preset light intensity or temperature

Technical overview:

- dimensions: 136x29x26 mm
- supply voltage: 3 VDC (2x batteries AAA)
- operating temperature: from -20°C to +55°C
- frequency: 868,3 MHz

For octagonal tubes

HTL 05

Crown Ø40 mm



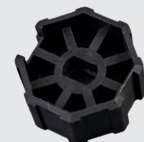
HTH 01

Adapter Ø40 mm



HTL 33

Crown Ø50 mm



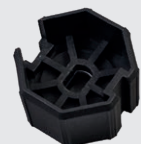
HTH 25

Adapter Ø50 mm



HTL 47

Crown Ø60 mm



HTH 35

Adapter Ø60 mm



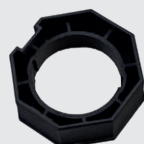
HTL 08

Crown Ø70 mm



HTH 04

Adapter Ø70 mm



For round tubes

HTL 35

Crown Ø37,5 mm



HTH 27

Adapter Ø37,5 mm



HTL 10

Crown Ø40 mm



HTH 06

Adapter Ø40 mm



HTL 30

Crown Ø50 mm



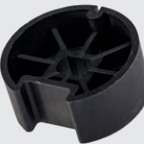
HTH 23

Adapter Ø50 mm



HTL 36

Crown Ø60 mm



HTH 28

Adapter Ø60 mm



HTL 12

Crown Ø68 mm



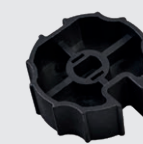
HTH 07

Adapter Ø68 mm



HTL 63

Crown Ø70 mm



HTH 63

Adapter Ø70 mm



HTL 40

Crown Ø78 mm



HTH 30

Adapter Ø78 mm



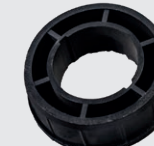
HTL 24

Crown Ø85 mm



HTH 14

Adapter Ø85 mm



HTL 71

Crown Ø98 mm



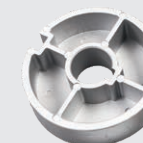
HTH 71

Adapter Ø98 mm



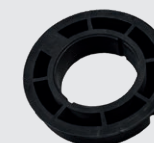
HTL 70

Crown Ø105 mm



HTH 70

Adapter Ø105 mm



HTH 20

Adapter Ø35/45 mm



HTL 01

Crown Ø50 mm



HTL 03

Crown Ø50 mm



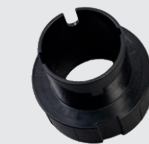
ZIP

Adapter Ø63 mm



ZIP

Adapter Ø78 mm



Tubular motor selection table

Torque		Roller blind length						
		1,5 m	2 m	2,5 m	3 m	3,5 m	4 m	5 m
N-6Nm	Φ=40	11 kg	9,5 kg	9 kg	8 kg	-	-	-
N-10Nm	Φ=40	20 kg	19 kg	18 kg	17 kg	-	-	-
N-13Nm	Φ=40	28 kg	26 kg	24 kg	22 kg			
N-20Nm	Φ=50	46 kg	44 kg	41 kg	39 kg	-	-	-
N-20Nm	Φ=60	42 kg	40 kg	38 kg	36 kg	-	-	-
N-40Nm	Φ=60	83 kg	79 kg	72 kg	69 kg	-	-	-
N-40Nm	Φ=70	70 kg	68 kg	66 kg	64 kg	-	-	-
N-50Nm	Φ=60	88 kg	84 kg	81 kg	78 kg	-	-	-
N-50Nm	Φ=70	82 kg	80 kg	77 kg	74 kg	-	-	-
N-100Nm	Φ=70	-	-	117 kg	110 kg	105 kg	100 kg	-
N-140Nm	Φ=70	-	-	-	150 kg	145 kg	140 kg	130 kg

WARNING!

The parameters given are only estimates - they depend on numerous factors (correct installation, co-efficient of friction of the blind, atmospheric conditions and other).

The standard length of power cord for all INEL tubular motors is 2m.

It is possible to order a custom (longer) cord.



Inel sp. z o. o.
ul. Mostowa 1
80-778 Gdańsk
Poland

+48 58 301 15 81
+48 58 305 49 77
biuro@inel.gda.pl

inel.gda.pl

