

YYGL35P-10/17 YYGL45P-20/15



In order to ensure the correct operation of the motor, use blocking hangers and stoppers in the lower slat. The window must be fitted with a sill. The length of the curtain must be adjusted to the length of the guides.

1. SAFETY GUIDELINES

1.1 Basic guidelines

The overload detection motor is delivered in a condition allowing for safe installation and operation, provided that all guidelines herein as well as relevant safety and accident prevention regulations are observed. Only qualified and licenced personnel is allowed to install and repair electrical devices. It is prohibited to make any changes or modifications to the drive. Warranty repairs may be conducted only by the manufacturer. Use only original spare parts and accessories during post-warranty repairs. Operational safety of the drive can only be ensured if it is used for its intended purpose. Do not exceed limit values given in technical information.

1.2 Additional safety regulations

Observe relevant safety and accident prevention regulations when installing, commissioning and maintaining the drive. The following must be given special consideration:

1. Fire safety regulations.
2. Accident prevention regulations.



1.3 General notes on risks and safety measures

These notes are general guidelines for the use of INEL devices in combination with other devices. These guidelines must be strictly observed when installing and operating the devices.



Warning - against possible damage to the drive, roller blind, roller blind cassette, elevation etc. if no relevant safety measures are taken:

- Check if all screw connections are secure before installing the drive and setting limit switches



Danger - means that there is a threat to life and limb of the user if no relevant safety measures are taken:

- Check the compatibility of the permissible voltage of the device with the local power supply before connecting.
- Observe applicable safety and accident prevention regulations.
- Use an isolation switch allowing for safe power supply disconnection (e.g. fuse cut-off switch) installed in such a way that all connections can easily be cut out.
- Inspect wires and cables regularly for damaged insulation and conductor continuity.
- If any damage is identified, cut off power immediately and replace the damaged wiring.

1.4 Warning

- Do not allow children to play with control devices.
- Keep the remote control out of reach of children.

- Observe the moving roller blind and keep people away until it fully opens or closes.
- The users of the roller blind must be instructed in its operation and existing risks related to its usage. Persons are deemed to have been trained if the employer, administrator or owner allowed them to use the roller blind and instructed them in its operation.

2. INSTALLATION INSTRUCTIONS

2.1 Safety regulations

- Only persons with appropriate authorisation may install the drive.
- The weight of the roller blind may not exceed the maximum load of the drive specified in the selection table (see the end of the instructions)
- Routing the cable properly (loop aimed downwards) will protect the drive against any water damage.
- Do not drill holes in motor housing.
- Protect the motor against contact with any liquids.
- Avoid crushing and impacting the motor, protect the motor against shock.
- Do not connect more than one on/off switch to a single motor.

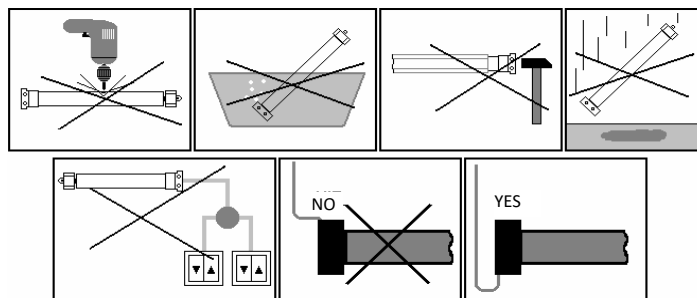


Figure 1

2.2 Installing the motor

- Fix the mounting bracket (A) to the side of the roller blind cassette, connect the adapter (D) to the thrust ring of the motor (C).
- Place an appropriate driver provided with the motor (E) on the motor axis, secure it with a pin (F), and slide the entire motor to the roller tube (G).

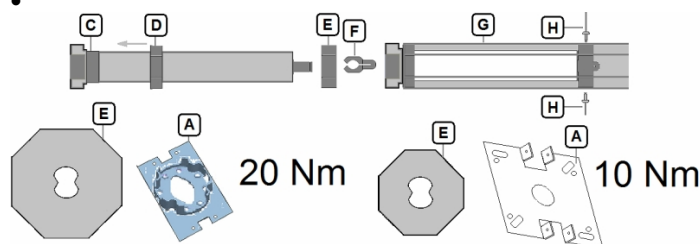


Figure 2

WARNING: The motor is fitted with an internal thermal cut-out which allows the roller blind to work continuously for ca. 4 min. After this time the temperature inside the motor will exceed the permissible value, which will cause power cut-out. Subsequent vertical movement of the roller blind will only be possible after the motor cools down (it can take up to twenty minutes). Using this cut-out greatly increases the life of the drive

2.3 Electrical connections

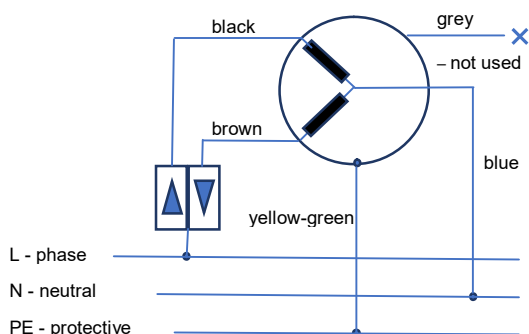


Figure 3



DISCONNECT POWER SUPPLY BEFORE MAKING ANY CONNECTIONS!



Improper roller blind installation will cause the motor to stop unexpectedly.

3. STARTUP

Before drive startup/programming check the condition of the curtain, guides and roller blind cassette and whether there is a sill mounted in the window!

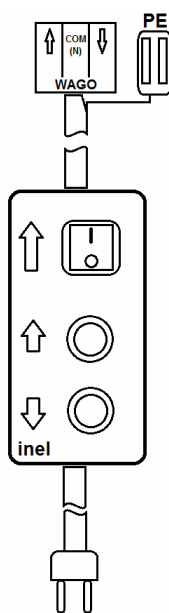
The roller blind cassette and guides should be free from any contaminants and ensure unrestricted curtain movement throughout the entire length. If the guides are contaminated with building materials or are too tight, they can cause damage to the drive and the roller blind, which is not covered by the warranty.

After delivery from the manufacturer the motor is factory set. The motor will adjust to the roller blind used after making 3 stops in the upper and lower limit position. After that the motor will be ready for use.

The motor detects low rpm caused by overload, and locks the direction it was moving before being stopped. In order to unlock the direction, move in the opposite direction for at least 1 second.

4. SERVICE CABLE

The service cable is fitted with two buttons and one switch:



(2-position, bistable) – applies voltage to the 'up' direction only.

(monostable) – allows for applying voltage to the 'up' direction.

(monostable) – allows for applying voltage to the 'down' direction.

Previously used service cable

The monostable "Program" button allows for applying voltage to the 'up' direction.

The tristable switch allows for applying voltage to the 'up' and 'down' directions.

Applying voltage to both directions at the same time is possible after pressing both the "Program" and "Down" switch.

5. RETURN TO FACTORY MODE

You can return to the factory mode at any time - however, you will need to **perform the adjustment procedure described in section 3 again.**

To enter factory mode you can use a service cable. Applying voltage to two directions at the same time for at least 3 seconds will reset to factory mode, which will be confirmed by a short up-down movement of the roller blind.

6. TROUBLESHOOTING

Problem: The motor does not react to commands

Cause: Thermal cut-out was activated

Solution: Wait for 10-20 minutes

Problem: Curtain fins do not close fully

Cause: The curtain is blocked in the guides

Solution: Check the roller blind guides and curtain slats

Problem: Curtain fins do not close fully

Cause: Roller blind too long

Solution: Shorten the roller blind curtain

Problem: The motor stops on its own

Cause: The curtain is blocked in the guides

Solution: Check the roller blind guides and curtain slats

Problem: The motor does not detect obstacles when moving down.

Cause: Wrong hangers used.

Solution: Install blocking hangers.

WARNING! Pauses between individual presses of the blind switch buttons should be at least 1 second long!

7. MOTOR SELECTION TABLE

TORQUE		ROLLER BLIND LENGTH			
		1,5m	2m	2,5m	3m
N-10Nm	Φ=40mm	20kg	19kg	18kg	17kg
N-20Nm	Φ=60mm	42kg	40kg	38kg	36kg