

Obstacle detection motor with built in radio receiver

YYGL35RP-10/17
YYGL45RP-20/15



The drive does not require the programming of limit positions.

In order to ensure the correct operation of the drive, use blocking hangers and stoppers in the lower slat. The window must be fitted with a sill. The length of the curtain must be adjusted to the length of the guides.

1. SAFETY GUIDELINES

1.1 Basic guidelines

The overload detection motor is delivered in a condition allowing for safe installation and operation, provided that all guidelines herein as well as relevant safety and accident prevention regulations are observed. Only qualified and licenced personnel is allowed to install and repair electrical devices. It is prohibited to make any changes or modifications to the drive. Warranty repairs may be conducted only by the manufacturer. Use only original spare parts and accessories during post-warranty repairs. Operational safety of the drive can only be ensured if it is used for its intended purpose. Do not exceed limit values given in technical information.

1.2 Additional safety regulations

Observe relevant safety and accident prevention regulations when installing, commissioning and maintaining the drive. The following must be given special consideration:

1. Fire safety regulations.
2. Accident prevention regulations.



1.3 General notes on risks and safety measures

These notes are general guidelines for the use of INEL devices in combination with other devices. These guidelines must be strictly observed when installing and operating the devices.



Warning - against possible damage to the drive, roller blind, roller blind cassette, elevation etc. if no relevant safety measures are taken:

- Check if all screw connections are secure before installing the drive and setting limit switches



Danger - means that there is a threat to life and limb of the user if no relevant safety measures are taken:

- Check the compatibility of the permissible voltage of the device with the local power supply before connecting.

- Observe applicable safety and accident prevention regulations.
- Use an isolation switch allowing for safe power supply disconnection (e.g. fuse cut-off switch) installed in such a way that all connections can easily be cut out.
- Inspect wires and cables regularly for damaged insulation and conductor continuity.

- If any damage is identified, cut off power immediately and replace the damaged wiring.

1.4 Warning

- Do not allow children to play with control devices.
- Keep the remote control out of reach of children.
- Observe the moving roller blind and keep people away until it fully opens or closes.
- The users of the roller blind must be instructed in its operation and existing risks related to its usage. Persons are deemed to have been trained if the employer, administrator or owner allowed them to use the roller blind and instructed them in its operation.

2. INSTALLATION INSTRUCTIONS

2.1 Safety regulations

- Only persons with appropriate authorisation may install the drive.
- The weight of the roller blind may not exceed the maximum load of the drive specified in the selection table (see the end of the instructions)
- Routing the cable properly (loop aimed downwards) will protect the drive against any water damage.
- Do not drill holes in motor housing.
- Protect the motor against contact with any liquids.
- Avoid crushing and impacting the motor, protect the motor against shock.
- Do not connect more than one on/off switch to a single motor.
- Do not connect more than one motor to a single on/off switch.

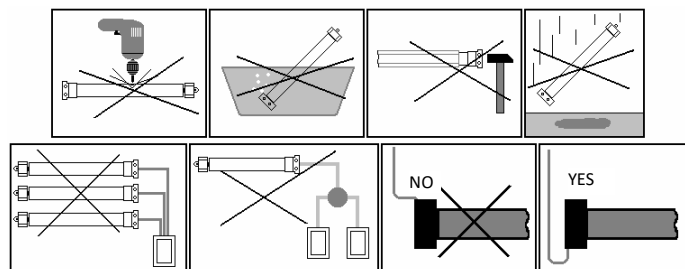


Figure 1

2.2 Installing the motor

- Fix the mounting bracket (A) to the side of the roller blind cassette, connect the adapter (D) to the thrust ring of the motor (C).
- Place an appropriate driver provided with the motor (E) on the motor axis, secure it with a pin (F), and slide the entire motor to the roller tube (G).

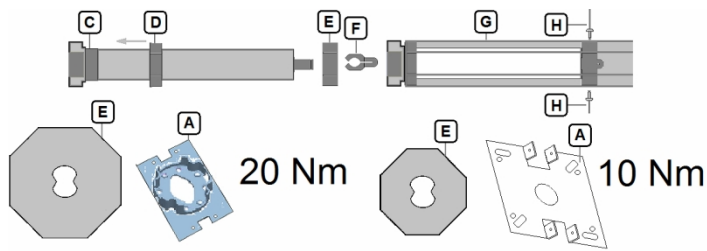


Figure 2

WARNING: The motor is fitted with an internal thermal cut-out which allows the roller blind to work continuously for ca. 4 min. After this time the temperature inside the motor will exceed the permissible value, which will cause power cut-out. Subsequent vertical movement of the roller blind will only be possible after the motor cools down (it can take up to twenty minutes). Using this cut-out greatly increases the life of the drive

2.3 Electrical connections

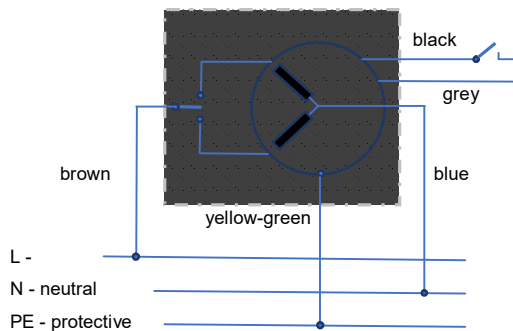


Figure 3

A **monostable switch** can be connected to the motor, which will short the control signal (black wire) with ground (grey wire) when pressed.

The switch operates in a loop: up - stop - down - stop.



DISCONNECT POWER SUPPLY BEFORE MAKING ANY CONNECTIONS!



Improper roller blind installation will cause the motor to stop unexpectedly.

In order to ensure the correct operation of the motor, use rigid hangers and stoppers in the lower slat. The length of the curtain must be adjusted to the length of the guides.

3. REGISTERING REMOTE CONTROLS

The motor is compatible with the following remote controls: PIL-01/04NS, 01/05/09/19PM, PIL-19/99PMT, PIL-01/05/09/19DL, PIL-19/99DLT, PIL-01PT.

Our drives allow for two methods of entering the remote control registration mode:

3.1 Each time after connecting to mains, each drive will enter the registration mode for 10 seconds.

After the motor is received from the manufacturer or if the remote control is lost, a new remote can be registered as follows:

Connect the drive to the mains: 230 VAC. Within 10 seconds from connecting to the mains, press the ▲ and ▼ buttons on the remote control at the same time for the selected channel

The drive will make a short up and down movement. Within the next 10 seconds register the channel by pressing ▲.

The registration will be confirmed by a short up-down movement.

WARNING: The procedure will erase all previously registered channels from the memory. This will allow to register a remote control with a drive without another registered remote control (new drive or lost/stolen remote).

3.2 Entering the registration mode with a previously registered remote control.

If a remote control has already been registered, subsequent channels of the same or another remote can be registered without disconnecting from the mains. On the registered remote, press the ▲ and ▼ buttons at the same time.

The roller blind will move up and down. It will remain in registration mode for the next 10 seconds. During that time, in order to register a new channel of the same or another remote, select the desired channel on the remote and press the ▲ button.

This way you can register any channel to any drive, but only if you have a previously registered remote control.

4. INVERTING MOVEMENT DIRECTION

If you need to invert the movement of the roller blind (roller blind movement direction does not match the directions on the remote control), you must enter programming mode (with a previously registered remote).

Press the ▲ and ▼ buttons on the remote at the same time, the motor will make a short up-down movement, then press STOP, the motor will make another short up-down movement. Press ▲ and ▼ again, and then STOP, the motor will move up-down-down-up.

WARNING: By inverting the direction of motor movement you will reset the drive to factory settings.

5. STARTUP

Before drive startup/programming check the condition of the curtain, guides and roller blind cassette and whether there is a sill mounted in the window!

The roller blind cassette and guides should be free from any contaminants and ensure unrestricted curtain movement throughout the entire length. If the guides are contaminated with building materials or are too tight, they can cause damage to the drive and the roller blind, which is not covered by the warranty.

After delivery from the manufacturer the motor is factory set. The motor will adjust to the roller blind used after making 3 stops in the upper and lower limit position. After that the motor will be ready for use.

The motor detects low rpm caused by overload, and locks the direction it was moving before being stopped. In order to unlock the direction, move in the opposite direction for at least 1 second.

If the motor is transferred to another roller blind, reset it to factory settings (section 6).

6. RETURN TO FACTORY MODE

Press the ▲ and ▼ buttons on the remote at the same time, the motor will make a short up-down movement, then press STOP. The motor will make another short up-down movement. Perform this operation 4 times.

7. TROUBLESHOOTING

Problem: The motor does not react to commands

Cause: Thermal cut-out was activated

Solution: Wait for 10-20 minutes

Problem: The motor revolves in the direction opposite to the input from the remote control

Solution: Invert the movement direction of the motor, section 4.

Problem: The motor stops on its own

Cause: The curtain is blocked in the guides

Solution: Check the roller blind guides and curtain slats

8. MOTOR SELECTION TABLE

Torque	Diameter	Roller blind length			
		1.5 m	2.0 m	2.5 m	3.0 m
10 Nm	40 mm	20 kg	19 kg	18 kg	17 kg
20 Nm	60 mm	42 kg	40 kg	38 kg	36 kg